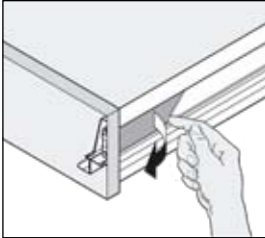
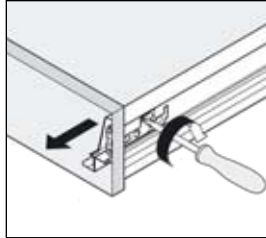


# (De)monteren laden en korven / How to fix and dismantle (pan) drawers

## Demontage van het ladefront / To remove the drawer front

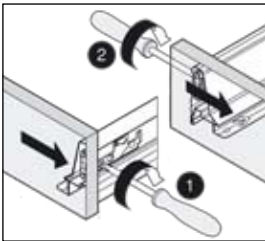


Afdekkap wegnemen  
Remove plastic cover cap

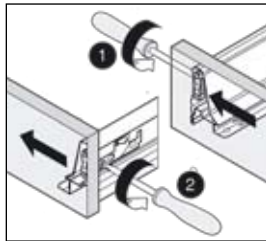


Wegnemen van het front  
Remove front

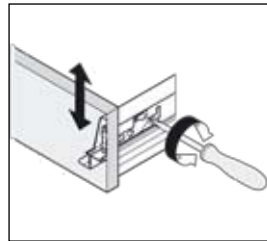
## Verstelling van het ladefront / To adjust the drawer front



Zijdelingse verstelling:  
naar rechts 1 mm  
Side adjustment:  
to the right 1 mm

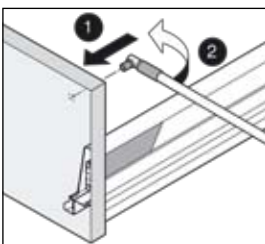


Zijdelingse verstelling:  
naar links 1 mm  
Side adjustment:  
to the left 1 mm

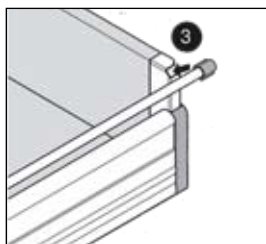


Hoogteverstelling:  $\pm 2$  mm  
Height adjustment:  $\pm 2$  mm

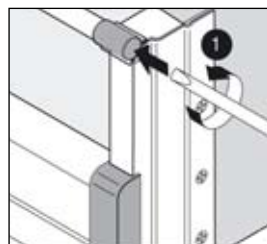
## Vorraadlade monteren en demonteren / To fit and remove the (pan) drawer



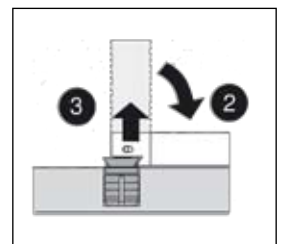
Montage vooraan  
Front fixing



Montage achteraan  
Rear fixing

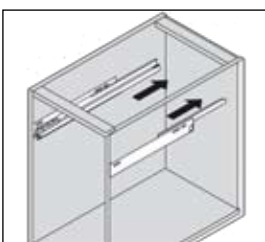


Demontage achteraan  
Dismantle rear

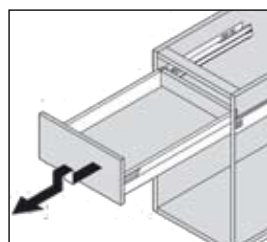
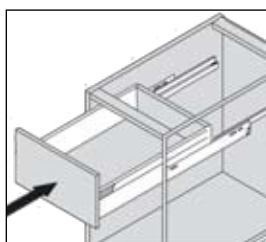


Demontage vooraan  
Dismantle in front

## Lade in- en uitnemen / To replace- and remove the drawer



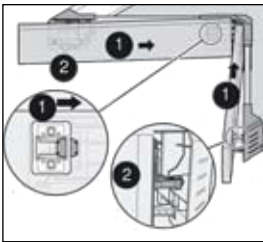
Inhangen  
To replace drawer,  
locate on to runners



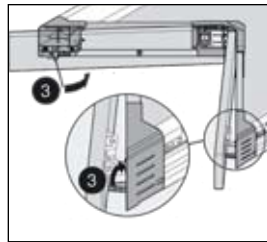
Uitnemen  
To remove, pull out fully and  
then pull up at the front

# (De)monteren laden en korven / How to fix and dismantle (pan) drawers

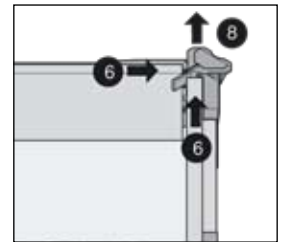
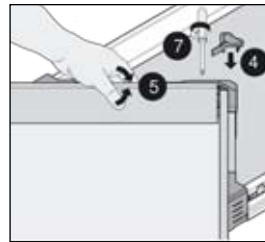
## Montage front Space Corner / Fitting the Space Corner front



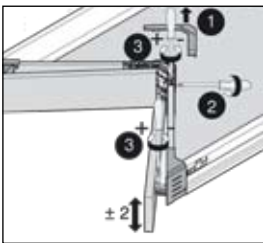
Montage van de fronten  
Fitting of the fronts



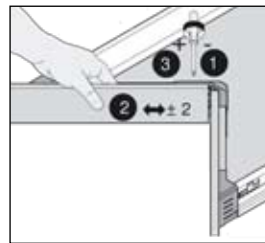
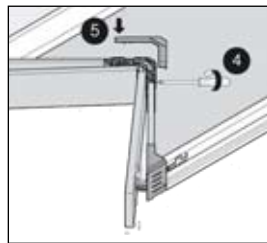
Afstandhouder inklappen  
Fold out distance



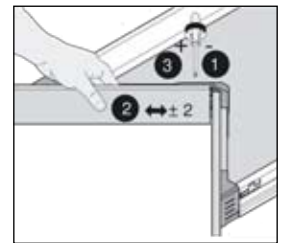
## Verstelling Space Corner / Space Corner adjustment



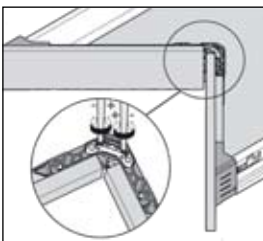
Hoogte verstelling  
Height adjustment



Zijdelingse verstelling  
Side adjustment

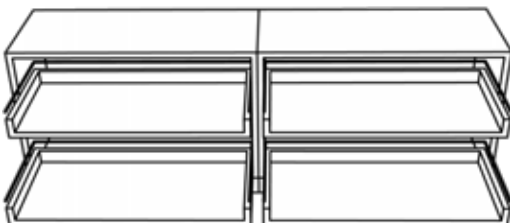


Schuinverstelling  
Diagonal adjustment

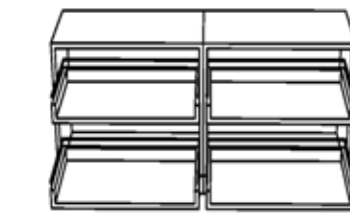


Verstelling van de veerkracht  
Adjustment of the tension

## Brede fronten monteren / How to fit wide fronts



Kasten koppelen  
Connect the units



Fronten voor de kasten hangen.  
Fronten zijn voorzien van boringen, bevestigingsmaterialen worden meegeleverd.



Haakse schroevendraaier wordt meegeleverd om de fronten te kunnen demontren / afstellen.

Including angled screwdriver for dismantling / adjusting the fronts.

Fit the fronts.  
Fronts are pre-drilled and will be supplied with all fitting materials required.